

NINETEEN

RIVIERA LAGOON

FS
REAL ESTATE
STAY AHEAD, INVEST SMART

db
DUBRICKS
POSSIBILITIES ARE LIMITLESS

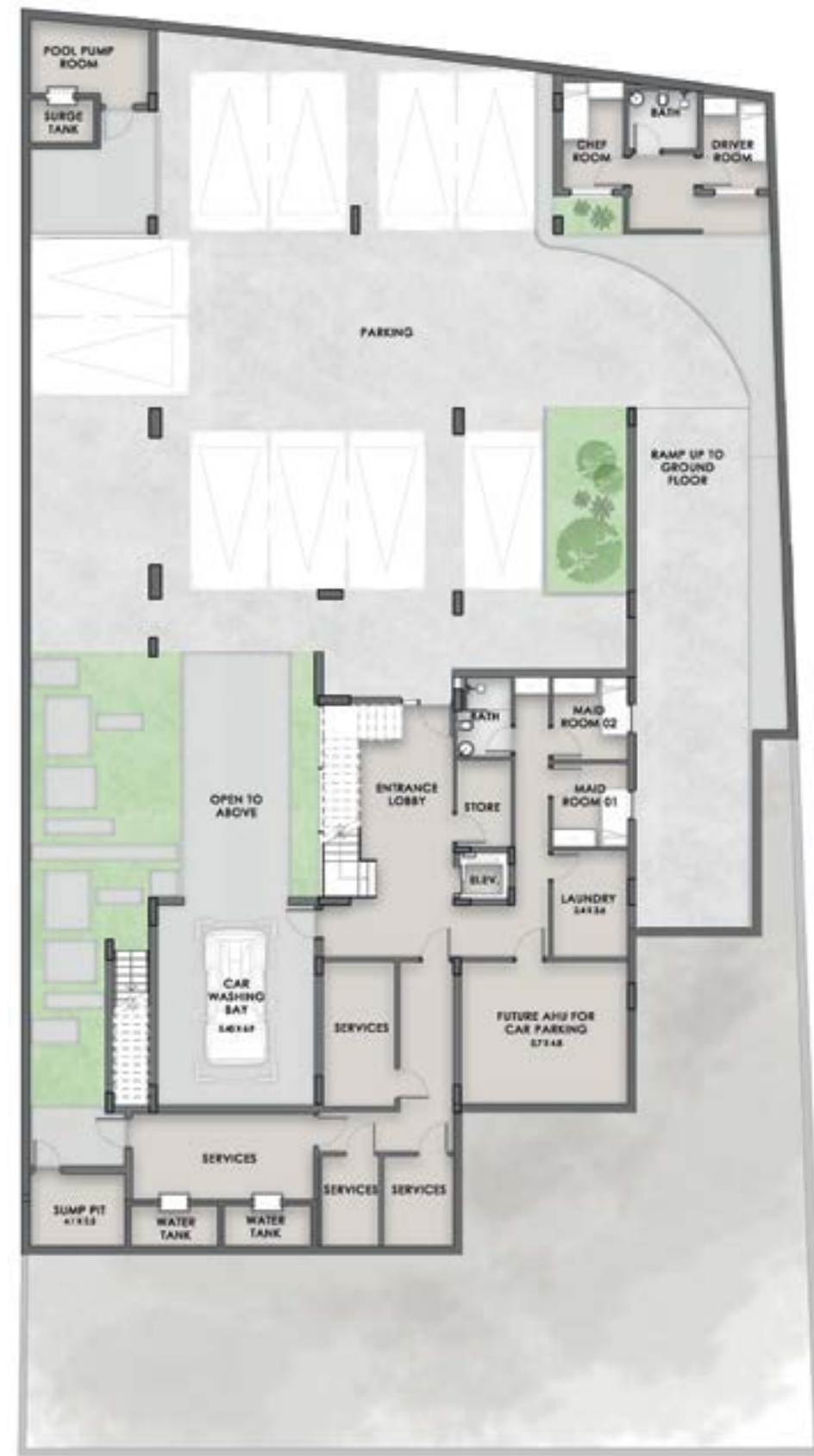


VILLA *type*

ONE

7 BEDROOM

PLOT SIZE RANGES
FROM 12,986 SQ.FT TO 13,807 SQ.FT



BASEMENT

9,538 SQ.FT



GROUND

3,794 SQ.FT



FIRST

4,230 SQ.FT

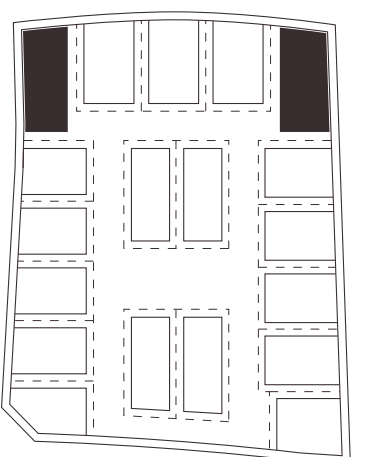


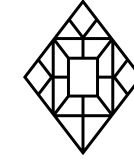
SECOND

4,700 SQ.FT

BUA: 22,262 SQ.FT • PLOT SIZE RANGES FROM 12,986 SQ.FT TO 13,807 SQ.FT

Disclaimer: **(1)** All materials, dimensions, renders and drawings are approximate and for illustration purposes only. **(2)** Information is subject to change without notice. **(3)** Actual areas may vary from the stated area. **(4)** Drawings not to scale. **(5)** The developer reserves the right to make revisions/alterations without any liability whatsoever. **(6)** Units are sold as unfurnished, without furniture, fittings, etc.



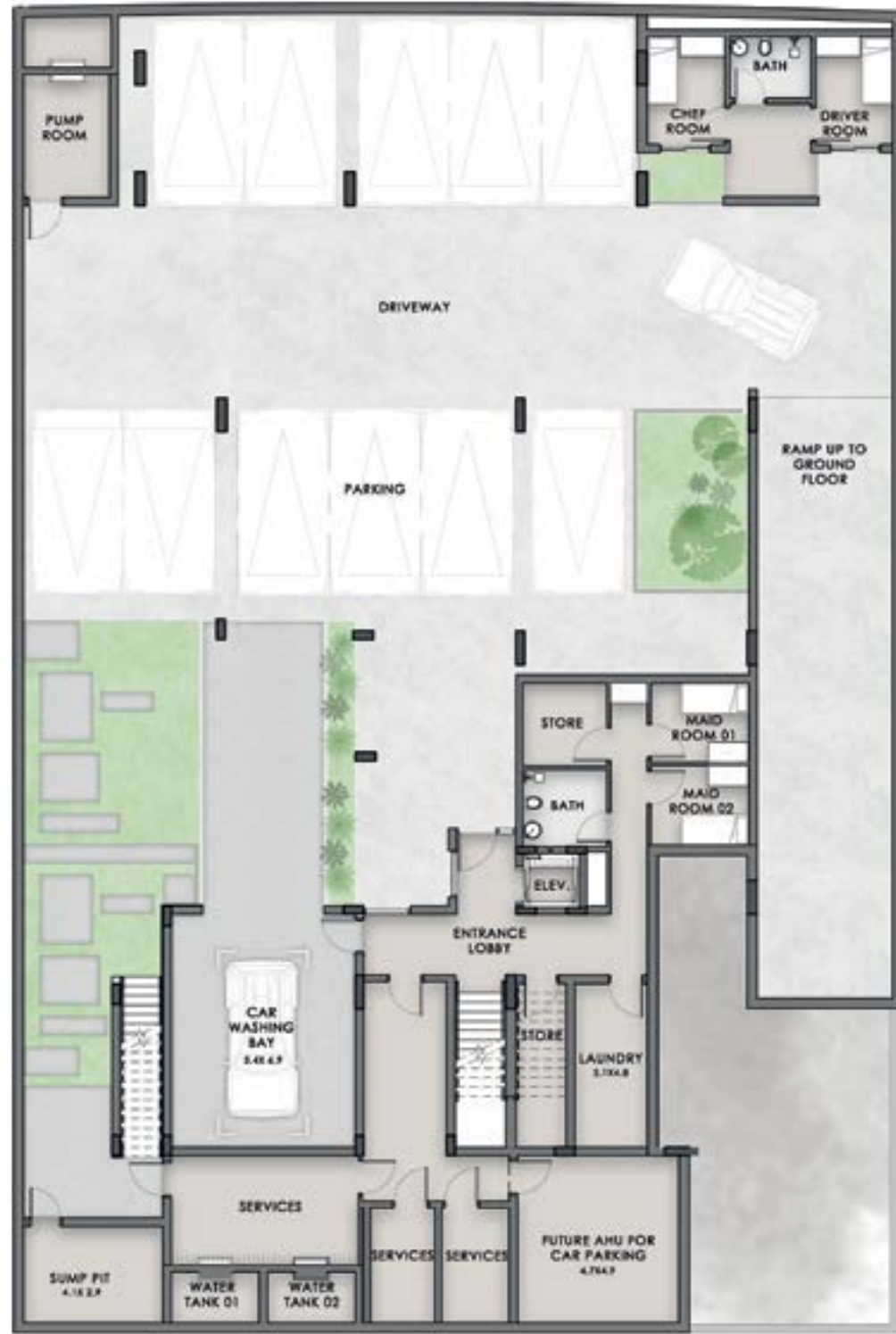


VILLA *type*

TWO

6 BEDROOM

PLOT SIZE RANGES
FROM 10,739 SQ.FT TO 10,963 SQ.FT



BASEMENT

9,195 SQ.FT



GROUND

3,431 SQ.FT



FIRST

3,981 SQ.FT

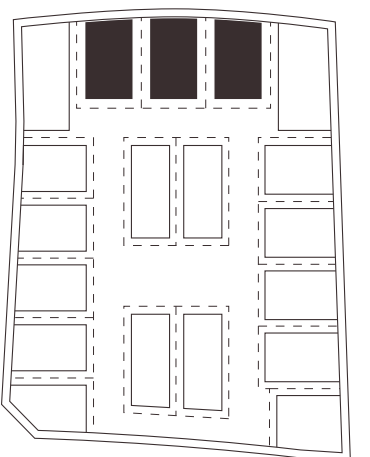


SECOND

4,270 SQ.FT

BUA: 20,877 SQ.FT • PLOT SIZE RANGES FROM 10,739 SQ.FT TO 10,963 SQ.FT

Disclaimer: **(1)** All materials, dimensions, renders and drawings are approximate and for illustration purposes only. **(2)** Information is subject to change without notice. **(3)** Actual areas may vary from the stated area. **(4)** Drawings not to scale. **(5)** The developer reserves the right to make revisions/alterations without any liability whatsoever. **(6)** Units are sold as unfurnished, without furniture, fittings, etc.





VILLA *type*

THREE

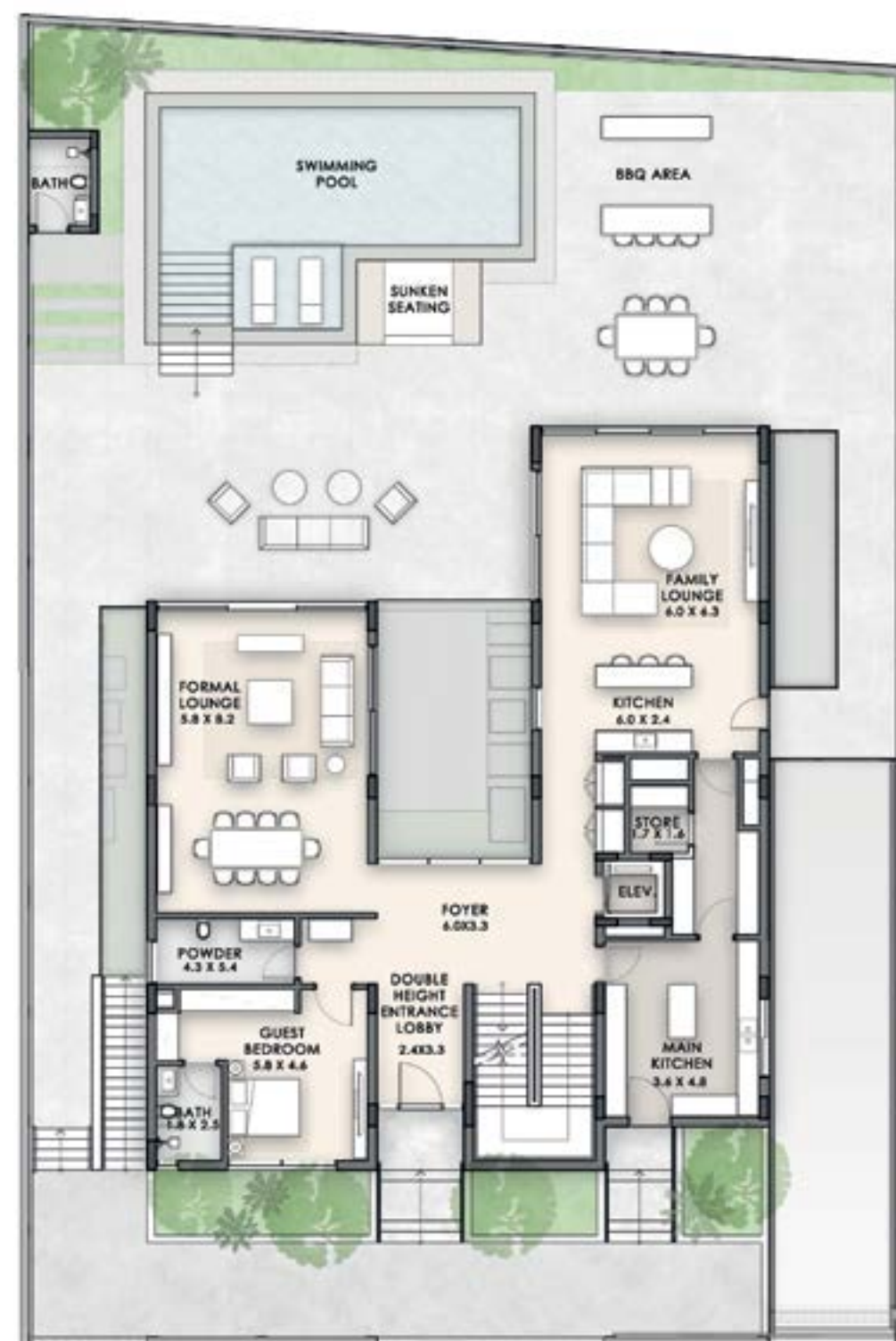
5 BEDROOM

PLOT SIZE RANGES
FROM 8,501 SQ.FT TO 9,603 SQ.FT



BASEMENT

8,088 SQ.FT



GROUND

2,837 SQ.FT



FIRST

3,520 SQ.FT

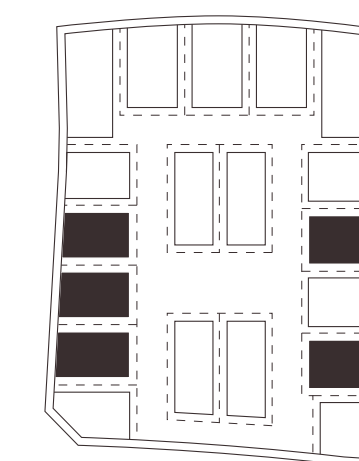


SECOND

4,063 SQ.FT

BUA: 18,508 SQ.FT • PLOT SIZE RANGES FROM 8,501 SQ.FT TO 9,603 SQ.FT

Disclaimer: **(1)** All materials, dimensions, renders and drawings are approximate and for illustration purposes only. **(2)** Information is subject to change without notice. **(3)** Actual areas may vary from the stated area. **(4)** Drawings not to scale. **(5)** The developer reserves the right to make revisions/alterations without any liability whatsoever. **(6)** Units are sold as unfurnished, without furniture, fittings, etc.



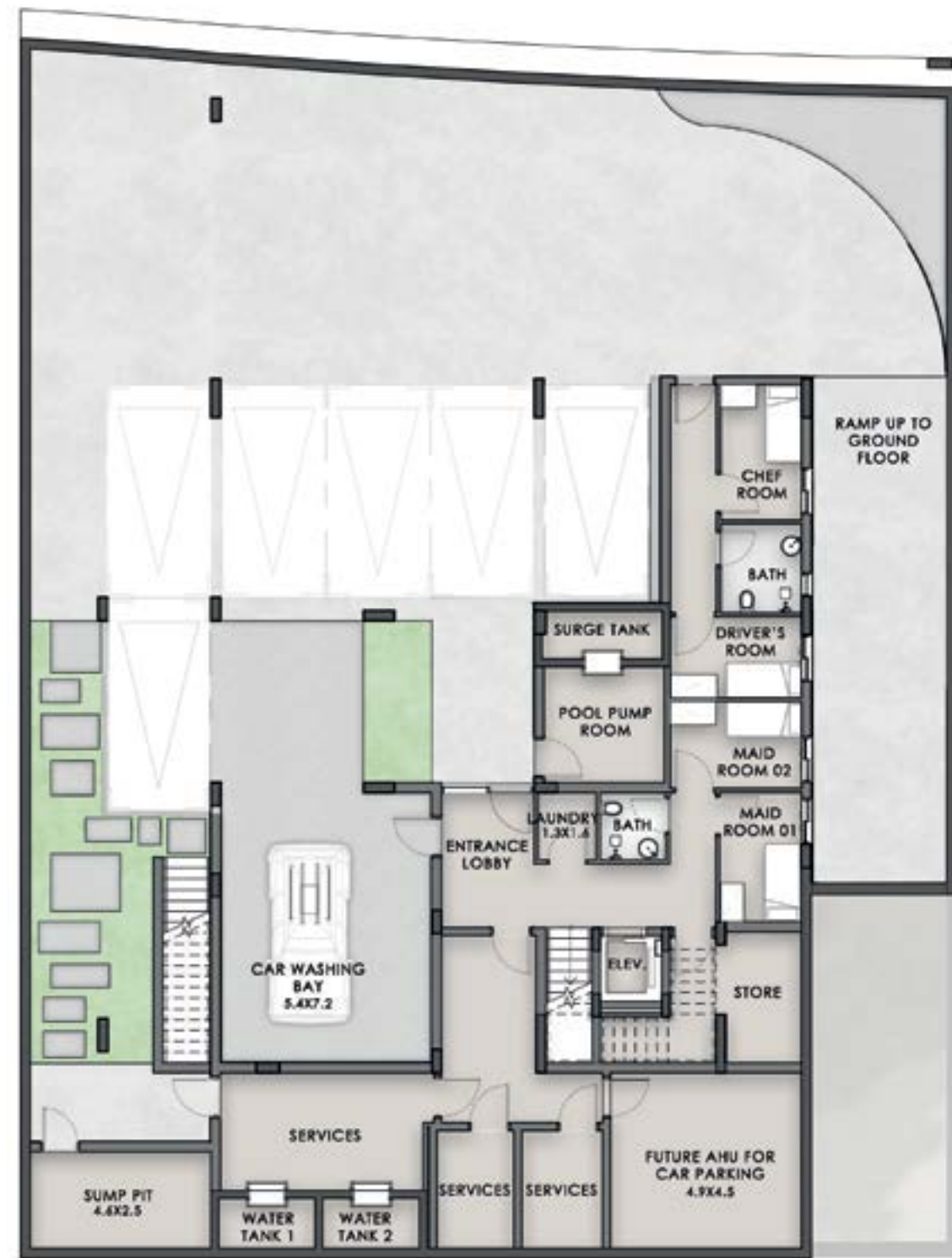


VILLA *type*

FOUR

5 BEDROOM

PLOT SIZE RANGES
FROM 8,145 SQ.FT TO 9,620 SQ.FT



BASEMENT

8,287 SQ.FT



GROUND

2,719 SQ.FT



FIRST

2,846 SQ.FT

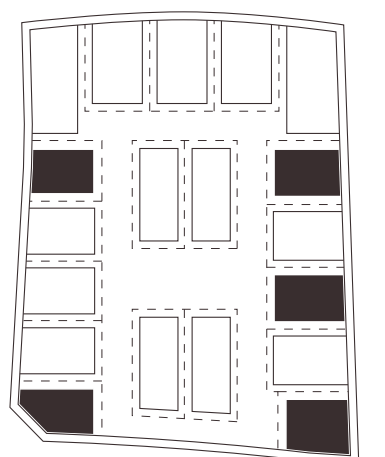


SECOND

3,160 SQ.FT

BUA: 17,012 SQ.FT • PLOT SIZE RANGES FROM 8,145 SQ.FT TO 9,620 SQ.FT

Disclaimer: **(1)** All materials, dimensions, renders and drawings are approximate and for illustration purposes only. **(2)** Information is subject to change without notice. **(3)** Actual areas may vary from the stated area. **(4)** Drawings not to scale. **(5)** The developer reserves the right to make revisions/alterations without any liability whatsoever. **(6)** Units are sold as unfurnished, without furniture, fittings, etc.





VILLA
type

FIVE

6 BEDROOM

PLOT SIZE RANGES
FROM 9,720 SQ.FT TO 10,043 SQ.FT



BASEMENT

8,038 SQ.FT



GROUND

2,950 SQ.FT



FIRST

3,414 SQ.FT

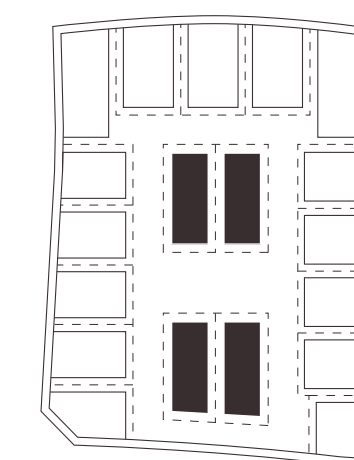


SECOND

3,518 SQ.FT

BUA: 17,920 SQ.FT • PLOT SIZE RANGES FROM 9,720 SQ.FT TO 10,043 SQ.FT

Disclaimer: **(1)** All materials, dimensions, renders and drawings are approximate and for illustration purposes only. **(2)** Information is subject to change without notice. **(3)** Actual areas may vary from the stated area. **(4)** Drawings not to scale. **(5)** The developer reserves the right to make revisions/alterations without any liability whatsoever. **(6)** Units are sold as unfurnished, without furniture, fittings, etc.

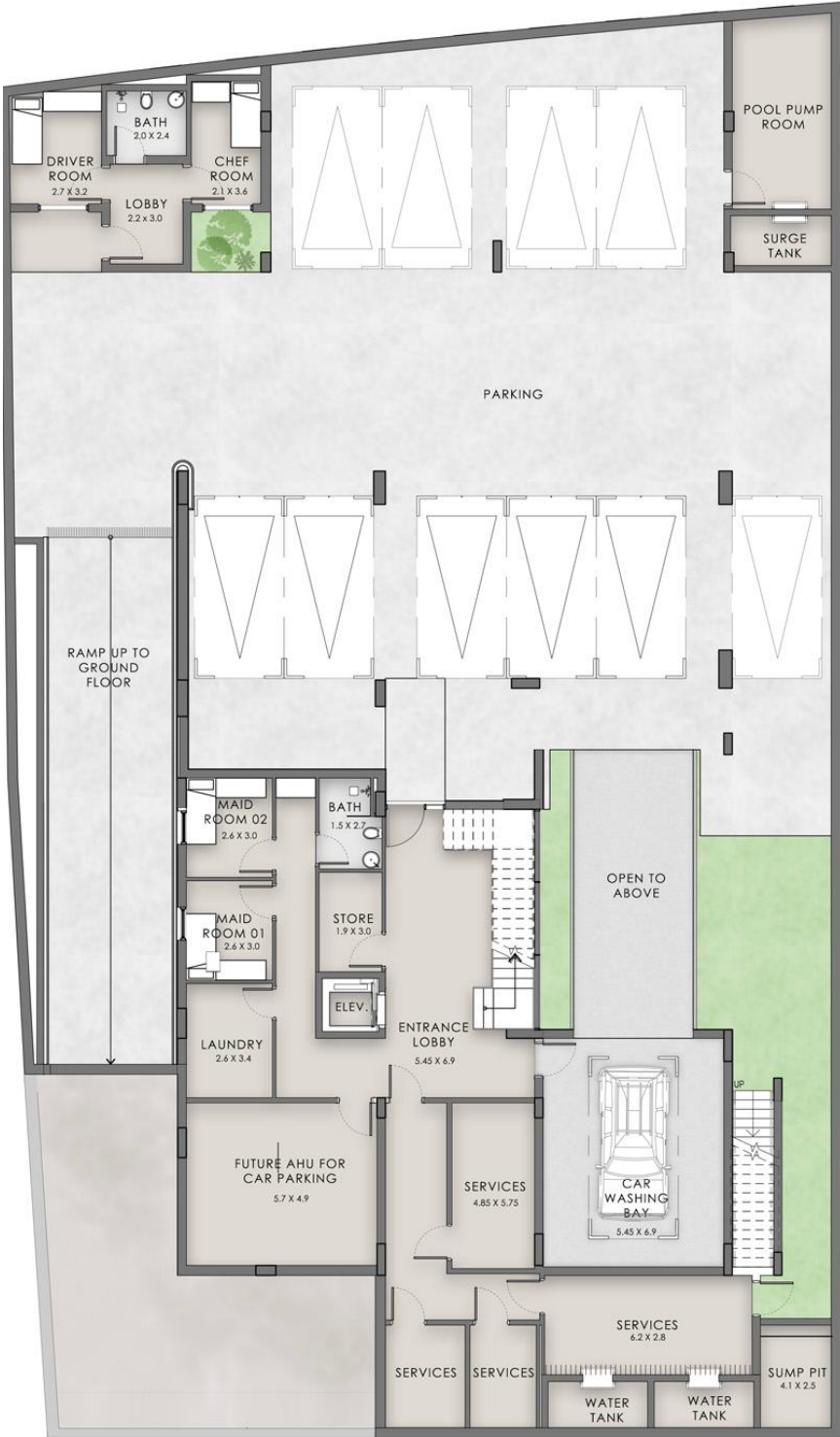


Villa Type One - Plot 1



Number of bedrooms : 7 bedrooms

Plot Area : 1,206 SQ.M | 12,986 SQ.FT • BUA : 2,044 SQ.M | 21,998 SQ.FT



Basement Area : 862 SQ.M | 9,274 SQ.FT

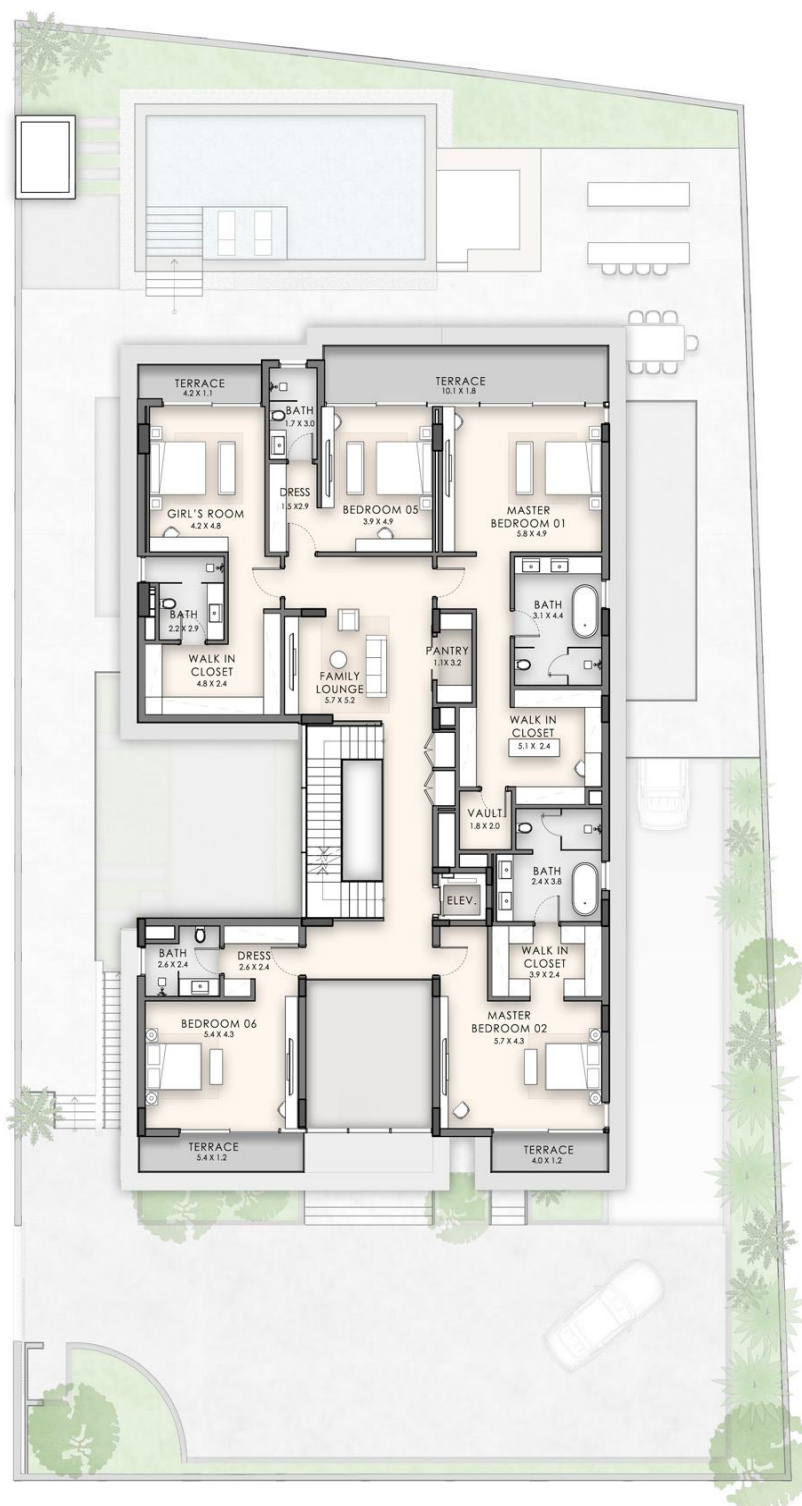
Disclaimer:
(1) All materials, dimensions, renders and drawings are approximate and for illustration purposes only. (2) Information is subject to change without notice. (3) Actual areas may vary from the stated area. (4) Drawings not to scale. (5) The developer reserves the right to make revisions/alterations without any liability whatsoever. (6) Units are sold as unfurnished, without furniture, fittings, etc.



Ground Floor : 352 SQ.M | 3,794 SQ.FT

Disclaimer:

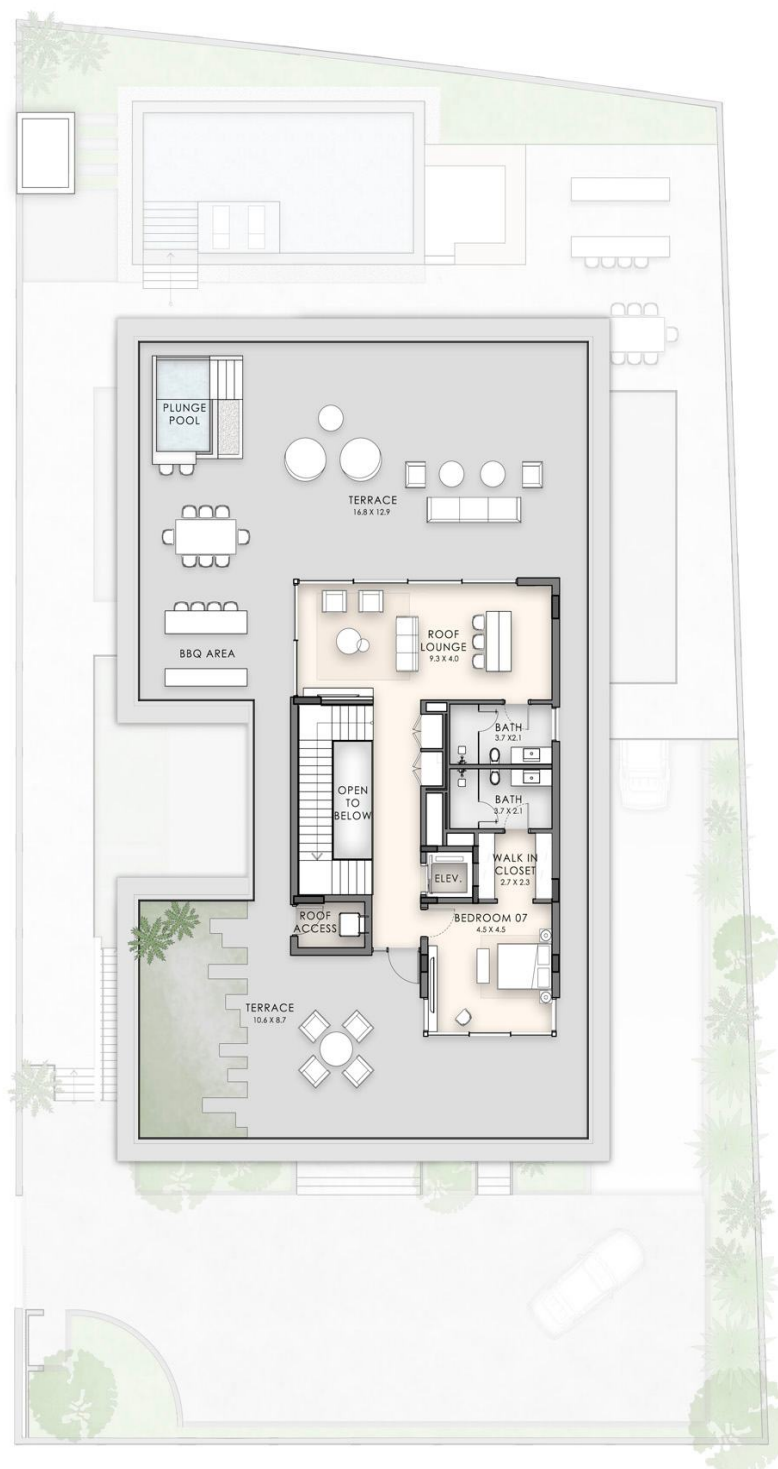
(1) All materials, dimensions, renders and drawings are approximate and for illustration purposes only. (2) Information is subject to change without notice. (3) Actual areas may vary from the stated area. (4) Drawings not to scale. (5) The developer reserves the right to make revisions/alterations without any liability whatsoever. (6) Units are sold as unfurnished, without furniture, fittings, etc.



First Floor : 393 SQ.M | 4,230 SQ.FT

Disclaimer:

(1) All materials, dimensions, renders and drawings are approximate and for illustration purposes only. (2) Information is subject to change without notice. (3) Actual areas may vary from the stated area. (4) Drawings not to scale. (5) The developer reserves the right to make revisions/alterations without any liability whatsoever. (6) Units are sold as unfurnished, without furniture, fittings, etc.



Second Floor : 437 SQ.M | 4,700 SQ.FT

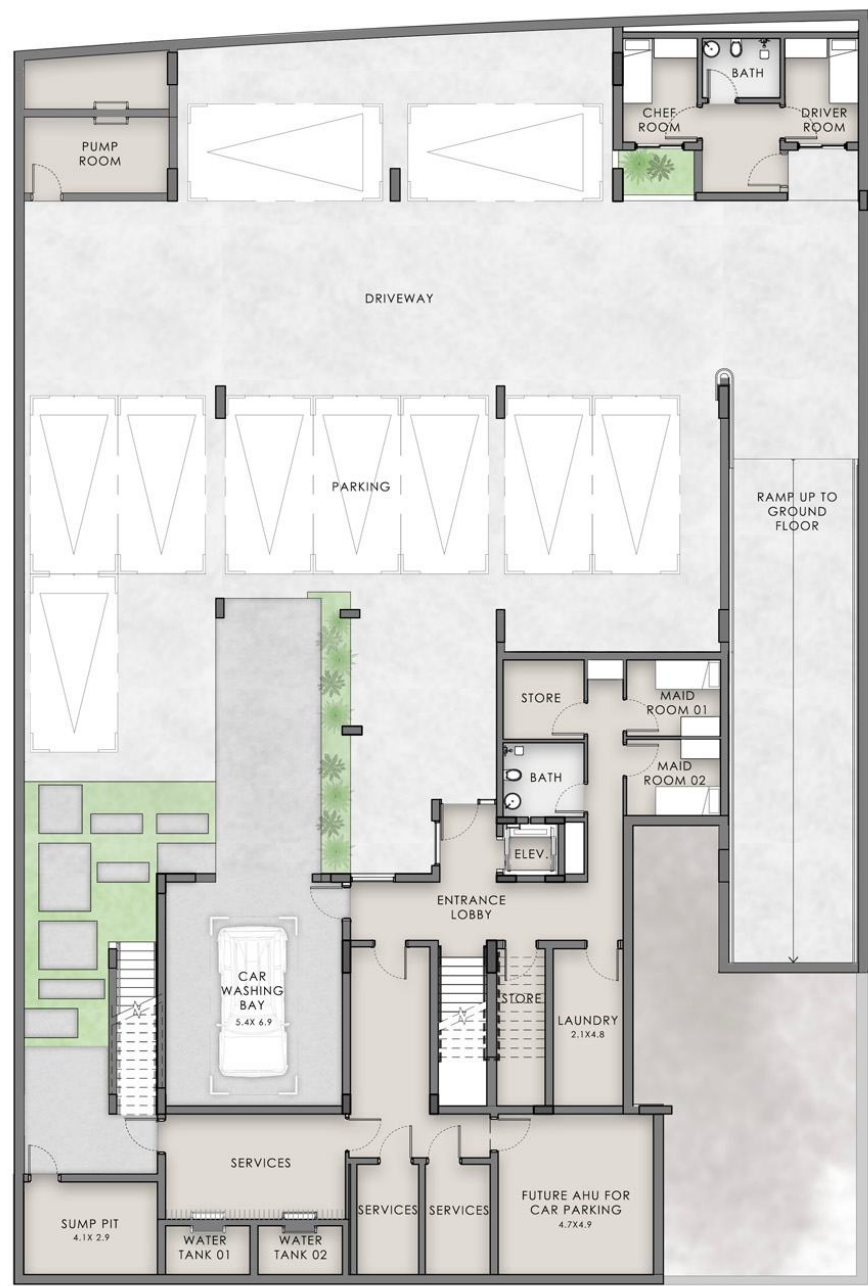
Disclaimer:

(1) All materials, dimensions, renders and drawings are approximate and for illustration purposes only. (2) Information is subject to change without notice. (3) Actual areas may vary from the stated area. (4) Drawings not to scale. (5) The developer reserves the right to make revisions/alterations without any liability whatsoever. (6) Units are sold as unfurnished, without furniture, fittings, etc.

Villa Type Two - Plot 2

Number of bedrooms : 6 bedrooms

Plot Area : 1,004 SQ.M | 10,810 SQ.FT • BUA : 1,925 SQ.M | 20,725 SQ.FT



Basement Area : 840 SQ.M | 9,043 SQ.FT

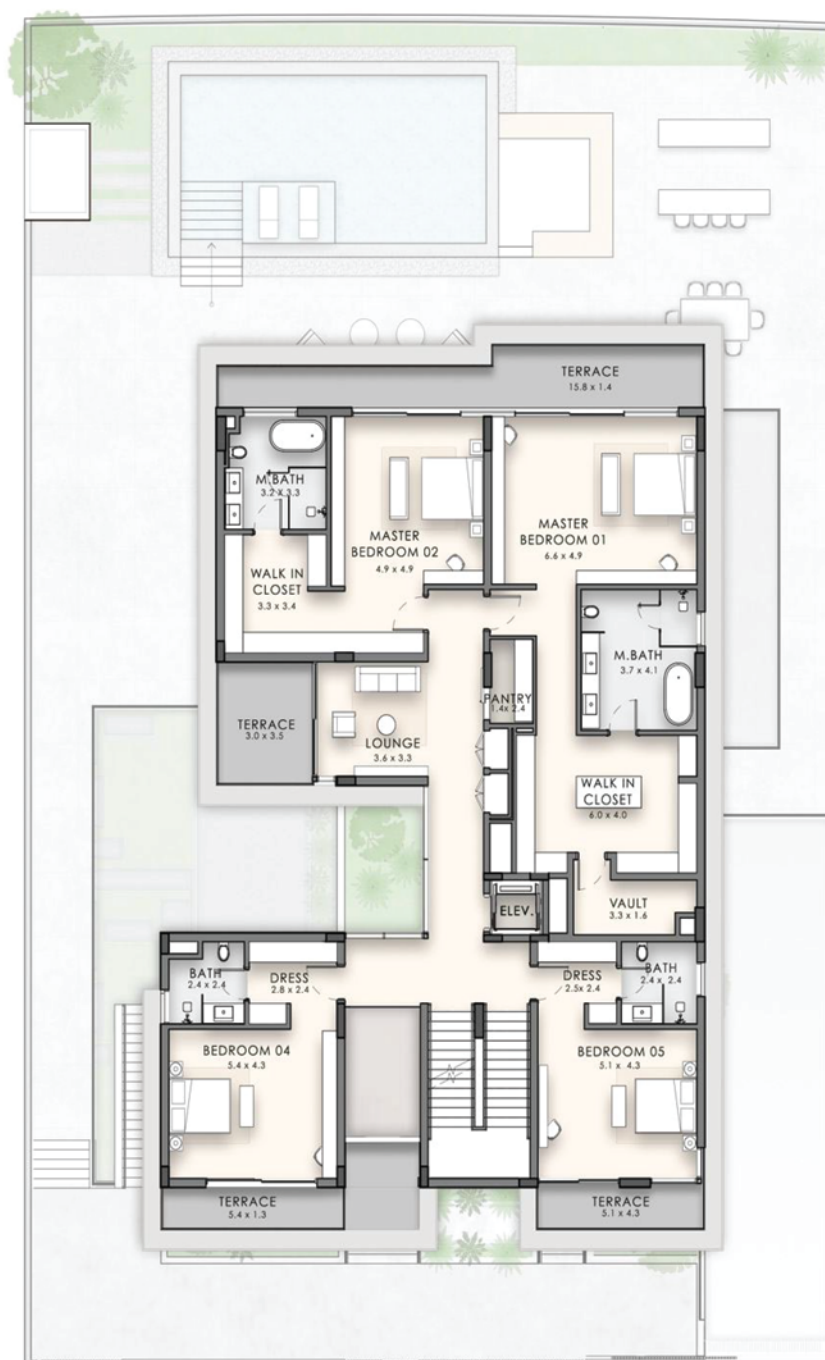
Disclaimer:
(1) All materials, dimensions, renders and drawings are approximate and for illustration purposes only. (2) Information is subject to change without notice. (3) Actual areas may vary from the stated area. (4) Drawings not to scale. (5) The developer reserves the right to make revisions/alterations without any liability whatsoever. (6) Units are sold as unfurnished, without furniture, fittings, etc.



Ground Area : 319 SQ.M | 3,431 SQ.FT

Disclaimer:

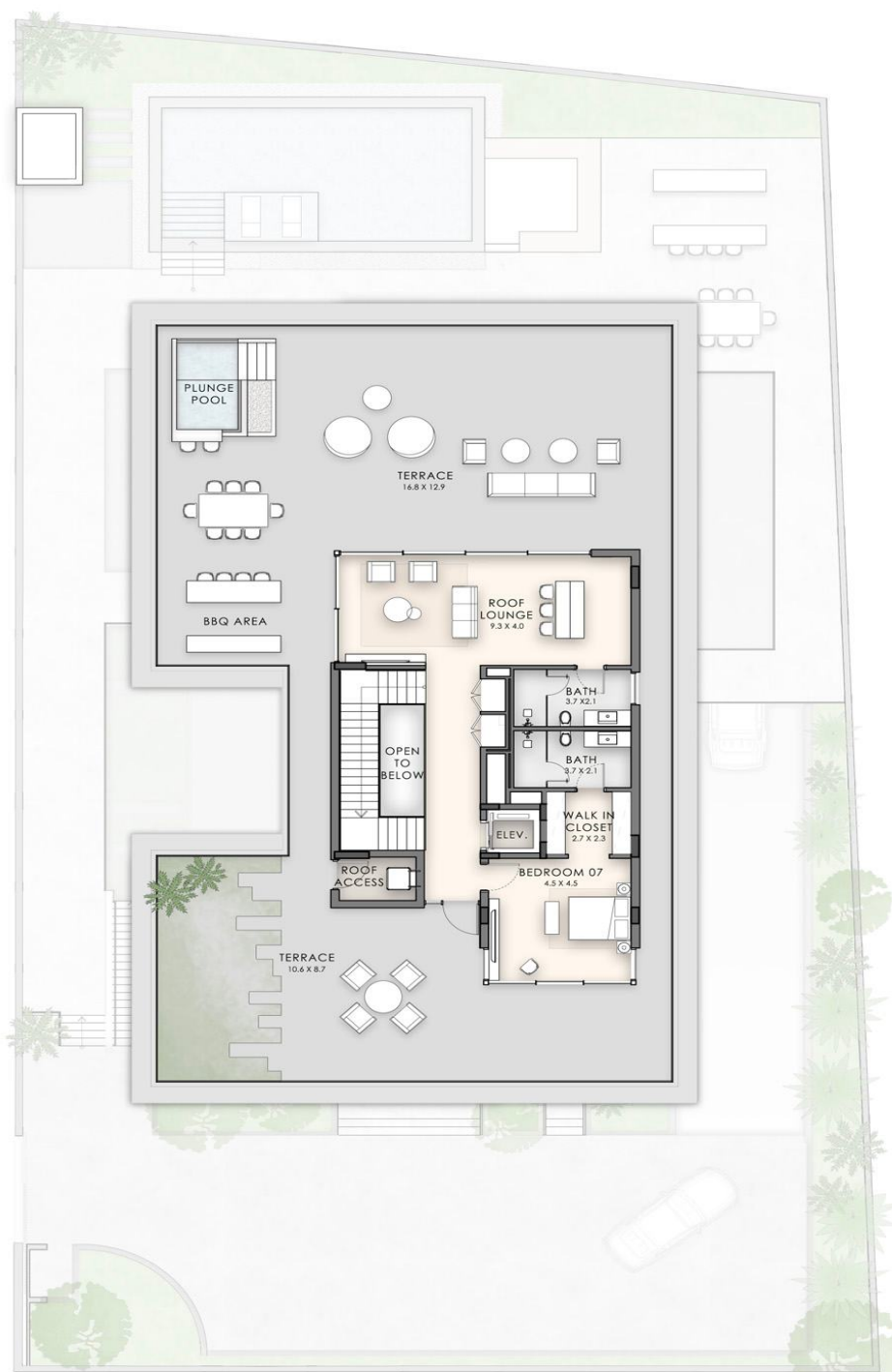
(1) All materials, dimensions, renders and drawings are approximate and for illustration purposes only. (2) Information is subject to change without notice. (3) Actual areas may vary from the stated area. (4) Drawings not to scale. (5) The developer reserves the right to make revisions/alterations without any liability whatsoever. (6) Units are sold as unfurnished, without furniture, fittings, etc.



First Area : 370 SQ.M | 3,981 SQ.FT

Disclaimer:

(1) All materials, dimensions, renders and drawings are approximate and for illustration purposes only. (2) Information is subject to change without notice. (3) Actual areas may vary from the stated area. (4) Drawings not to scale. (5) The developer reserves the right to make revisions/alterations without any liability whatsoever. (6) Units are sold as unfurnished, without furniture, fittings, etc.



Second Area : 397 SQ.M | 4,270 SQ.FT

Disclaimer:

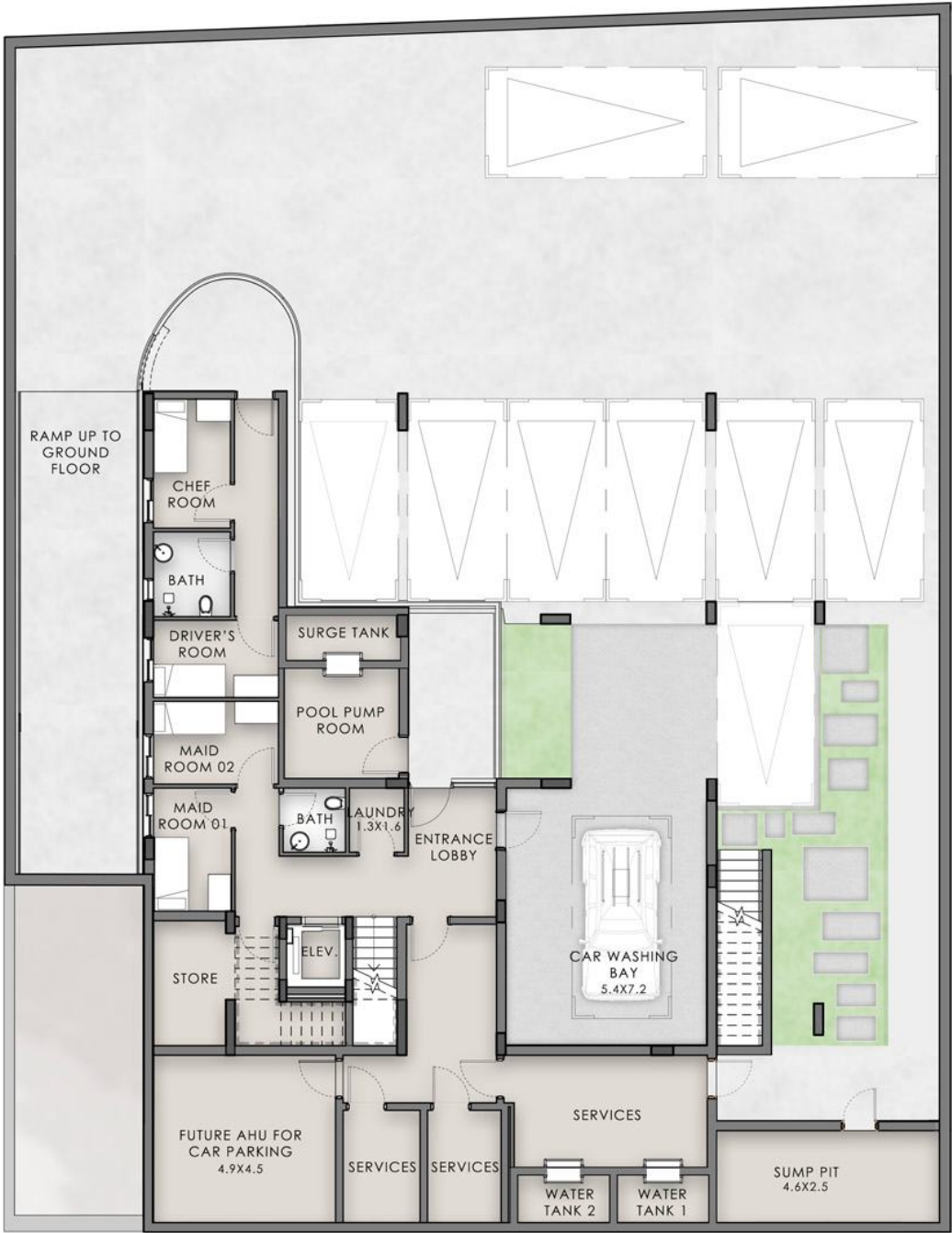
(1) All materials, dimensions, renders and drawings are approximate and for illustration purposes only. (2) Information is subject to change without notice. (3) Actual areas may vary from the stated area. (4) Drawings not to scale. (5) The developer reserves the right to make revisions/alterations without any liability whatsoever. (6) Units are sold as unfurnished, without furniture, fittings, etc.

Villa Type Four - Plot 6



Number of bedrooms : 5 bedrooms

Plot Area : 837 SQ.M | 9,007 SQ.FT • BUA : 1,546 SQ.M | 16,641 SQ.FT



Basement Area : 735 SQ.M | 7,915 SQ.FT

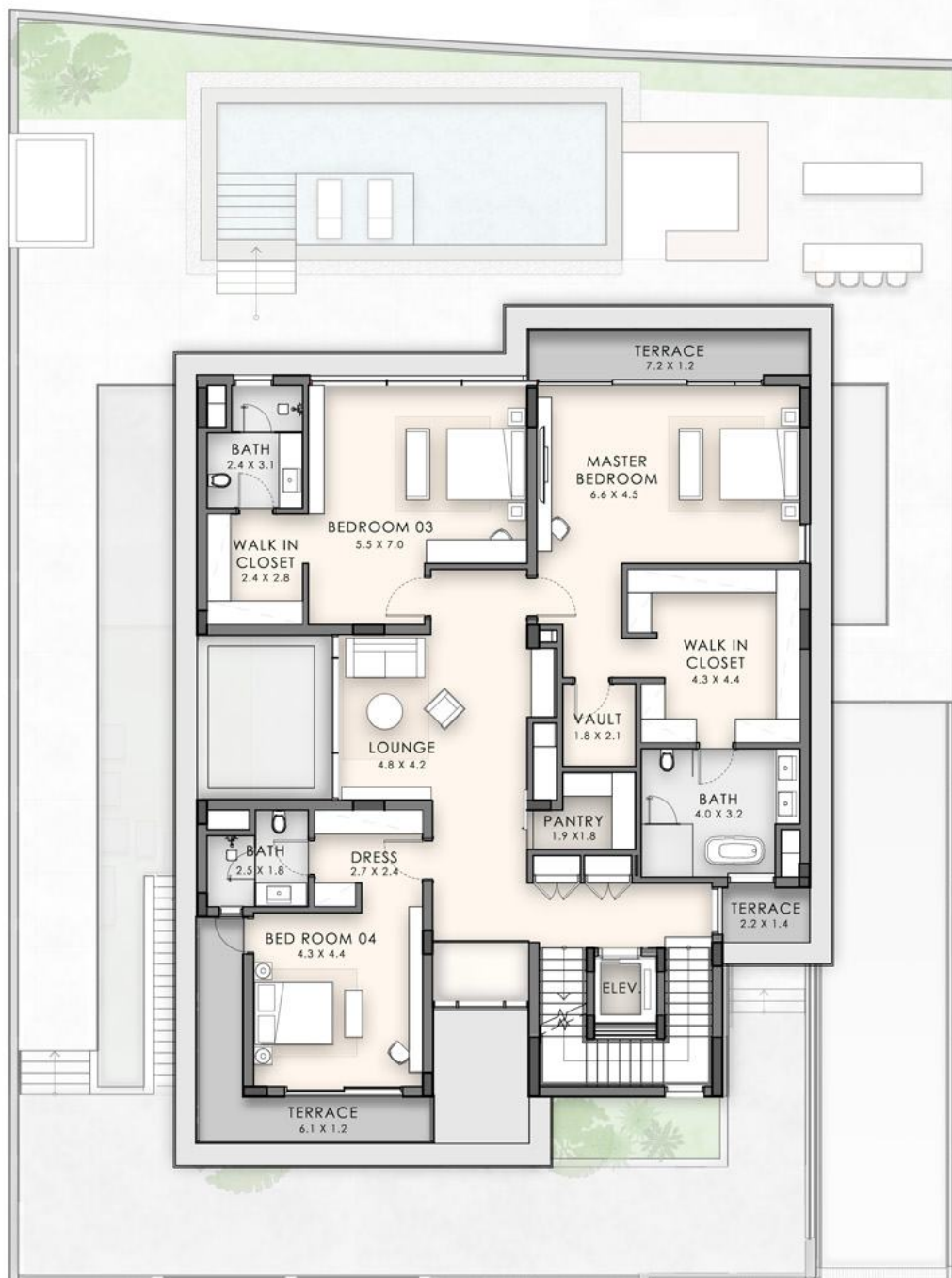
Disclaimer:
(1) All materials, dimensions, renders and drawings are approximate and for illustration purposes only. (2) Information is subject to change without notice. (3) Actual areas may vary from the stated area. (4) Drawings not to scale. (5) The developer reserves the right to make revisions/alterations without any liability whatsoever. (6) Units are sold as unfurnished, without furniture, fittings, etc.



Ground Area : 253 SQ.M | 2,720 SQ.FT

Disclaimer:

(1) All materials, dimensions, renders and drawings are approximate and for illustration purposes only. (2) Information is subject to change without notice. (3) Actual areas may vary from the stated area. (4) Drawings not to scale. (5) The developer reserves the right to make revisions/alterations without any liability whatsoever. (6) Units are sold as unfurnished, without furniture, fittings, etc.



First Area : 264 SQ.M | 2,846 SQ.FT

Disclaimer:

(1) All materials, dimensions, renders and drawings are approximate and for illustration purposes only. (2) Information is subject to change without notice. (3) Actual areas may vary from the stated area. (4) Drawings not to scale. (5) The developer reserves the right to make revisions/alterations without any liability whatsoever. (6) Units are sold as unfurnished, without furniture, fittings, etc.



Second Area : 294 SQ.M | 3,160 SQ.FT

Disclaimer:

(1) All materials, dimensions, renders and drawings are approximate and for illustration purposes only. (2) Information is subject to change without notice. (3) Actual areas may vary from the stated area. (4) Drawings not to scale. (5) The developer reserves the right to make revisions/alterations without any liability whatsoever. (6) Units are sold as unfurnished, without furniture, fittings, etc.

Villa Type Three - Plot 7



Number of bedrooms : 5 bedrooms

Plot Area : 847 SQ.M | 9,112 SQ.FT • BUA : 1,677 SQ.M | 18,049 SQ.FT



Basement Area : 709 SQ.M | 7,629, SQ.FT

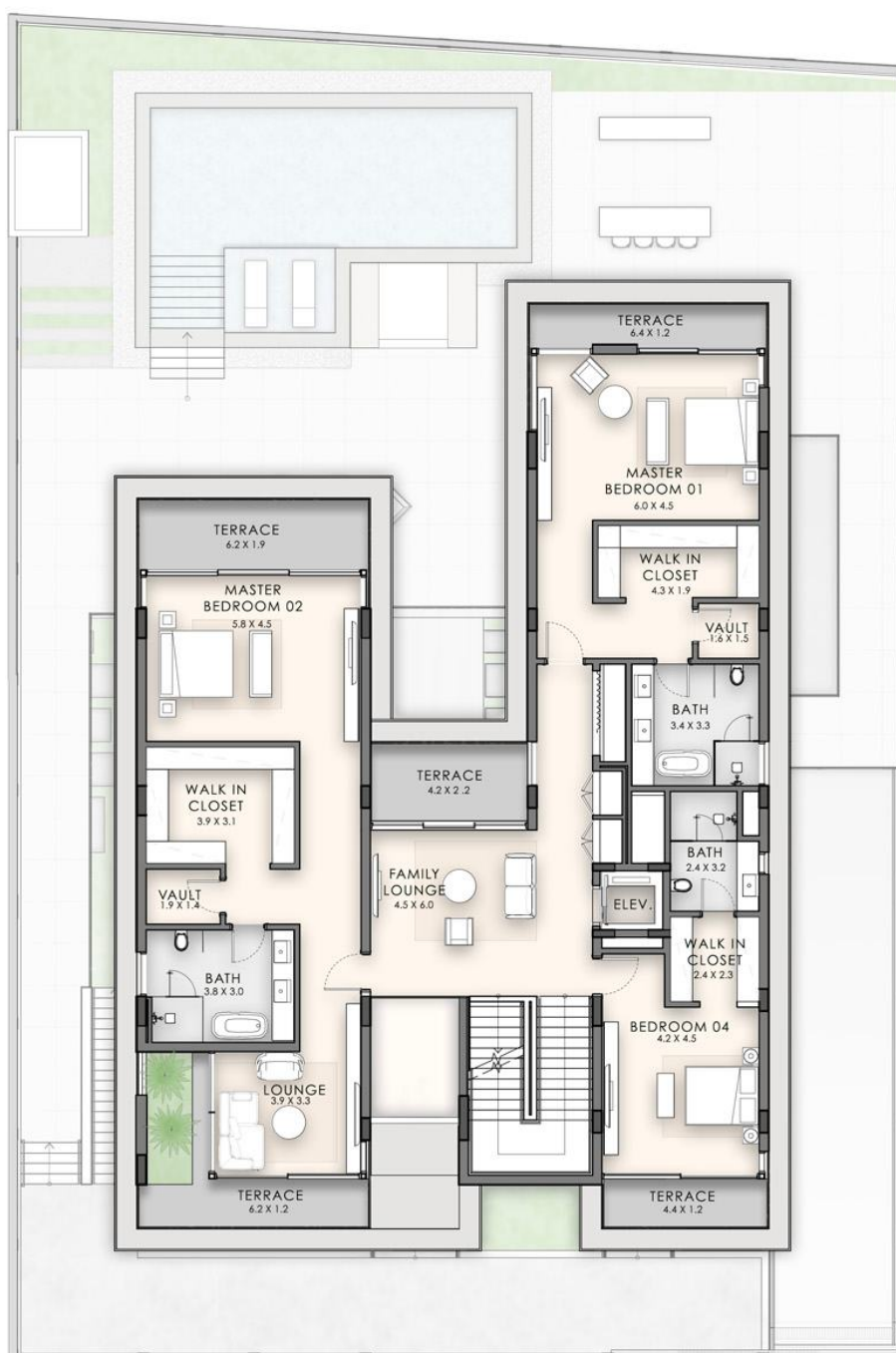
Disclaimer:
(1) All materials, dimensions, renders and drawings are approximate and for illustration purposes only. (2) Information is subject to change without notice. (3) Actual areas may vary from the stated area. (4) Drawings not to scale. (5) The developer reserves the right to make revisions/alterations without any liability whatsoever. (6) Units are sold as unfurnished, without furniture, fittings, etc.



Ground Area : 264 SQ.M | 2,837 SQ.FT

Disclaimer:

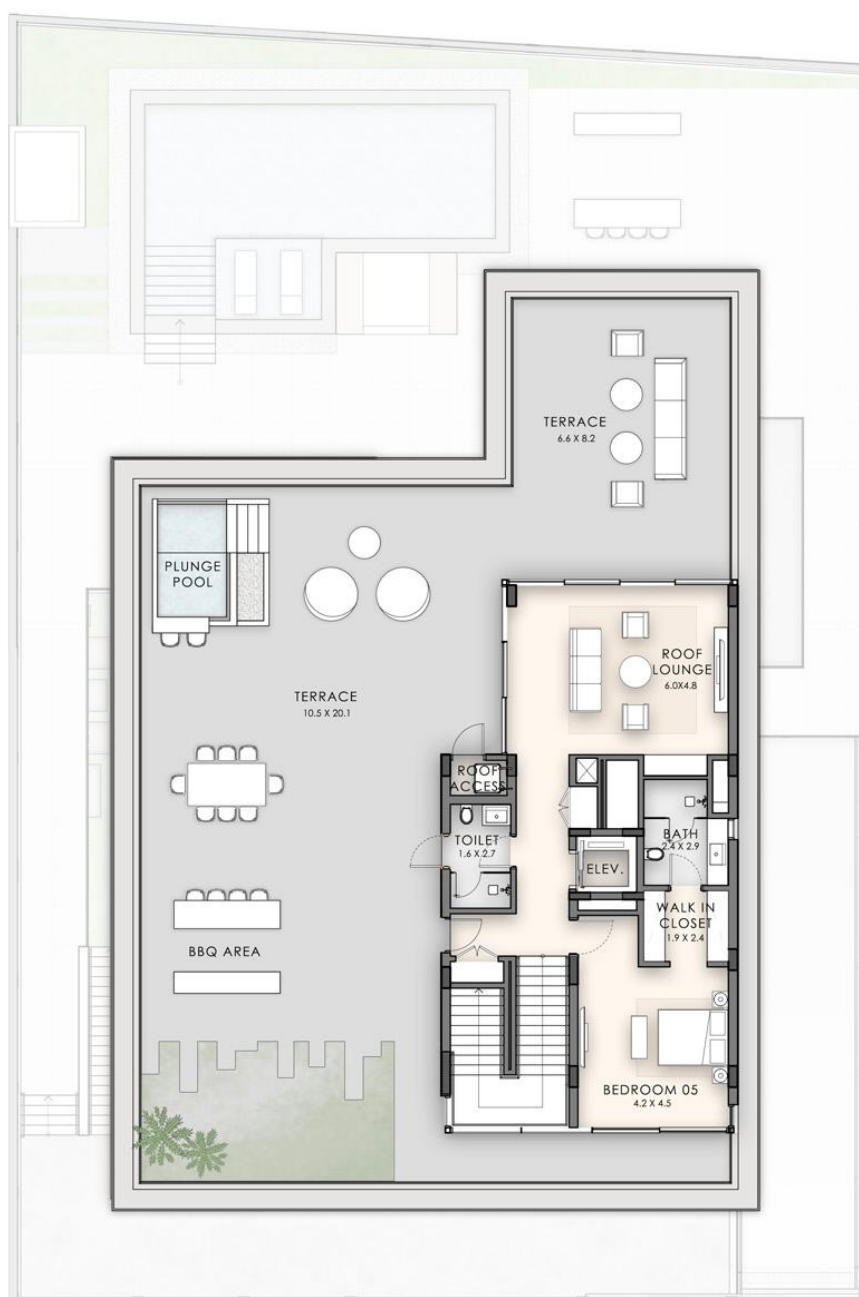
(1) All materials, dimensions, renders and drawings are approximate and for illustration purposes only. (2) Information is subject to change without notice. (3) Actual areas may vary from the stated area. (4) Drawings not to scale. (5) The developer reserves the right to make revisions/alterations without any liability whatsoever. (6) Units are sold as unfurnished, without furniture, fittings, etc.



First Area : 327 SQ.M | 3,520 SQ.FT

Disclaimer:

(1) All materials, dimensions, renders and drawings are approximate and for illustration purposes only. (2) Information is subject to change without notice. (3) Actual areas may vary from the stated area. (4) Drawings not to scale. (5) The developer reserves the right to make revisions/alterations without any liability whatsoever. (6) Units are sold as unfurnished, without furniture, fittings, etc.



Second Area : 378 SQ.M | 4,063 SQ.FT

Disclaimer:

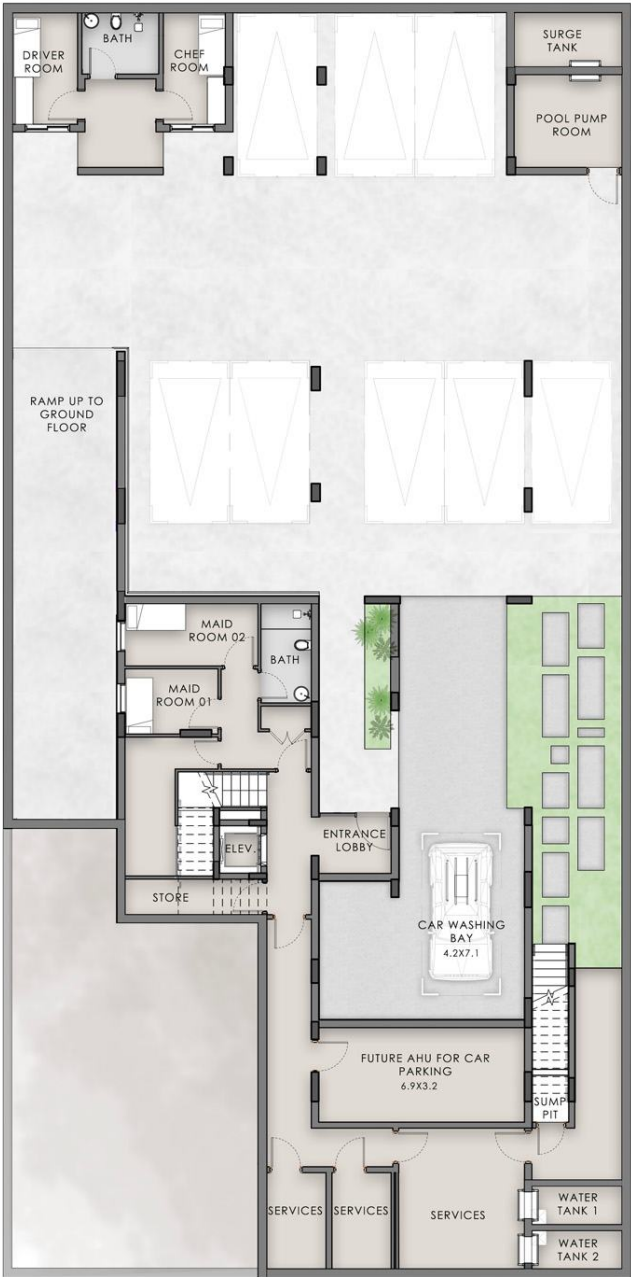
(1) All materials, dimensions, renders and drawings are approximate and for illustration purposes only. (2) Information is subject to change without notice. (3) Actual areas may vary from the stated area. (4) Drawings not to scale. (5) The developer reserves the right to make revisions/alterations without any liability whatsoever. (6) Units are sold as unfurnished, without furniture, fittings, etc.

Villa Type Five - Plot 16



Number of bedrooms : 6 bedrooms

Plot Area : 903 SQ.M | 9,720 SQ.FT • BUA : 1,665 SQ.M | 17,920 SQ.FT



Basement Area : 747 SQ.M | 8,038 SQ.FT

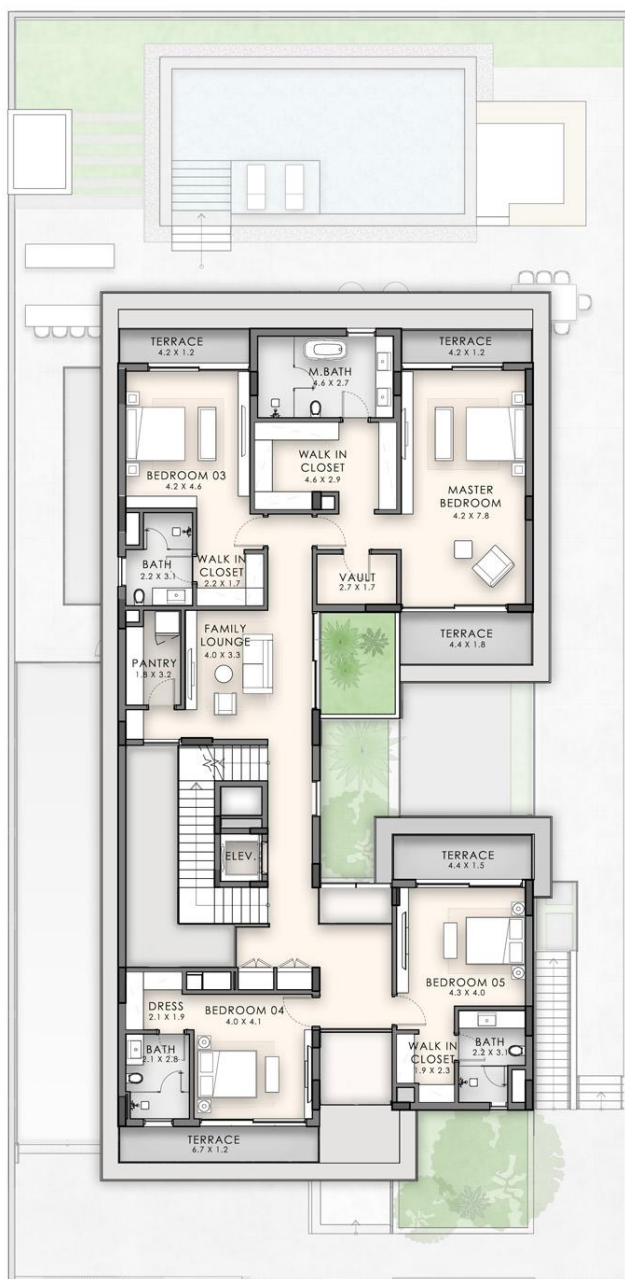
Disclaimer:
(1) All materials, dimensions, renders and drawings are approximate and for illustration purposes only. (2) Information is subject to change without notice. (3) Actual areas may vary from the stated area. (4) Drawings not to scale. (5) The developer reserves the right to make revisions/alterations without any liability whatsoever. (6) Units are sold as unfurnished, without furniture, fittings, etc.



Ground Area : 274 SQ.M | 2,950 SQ.FT

Disclaimer:

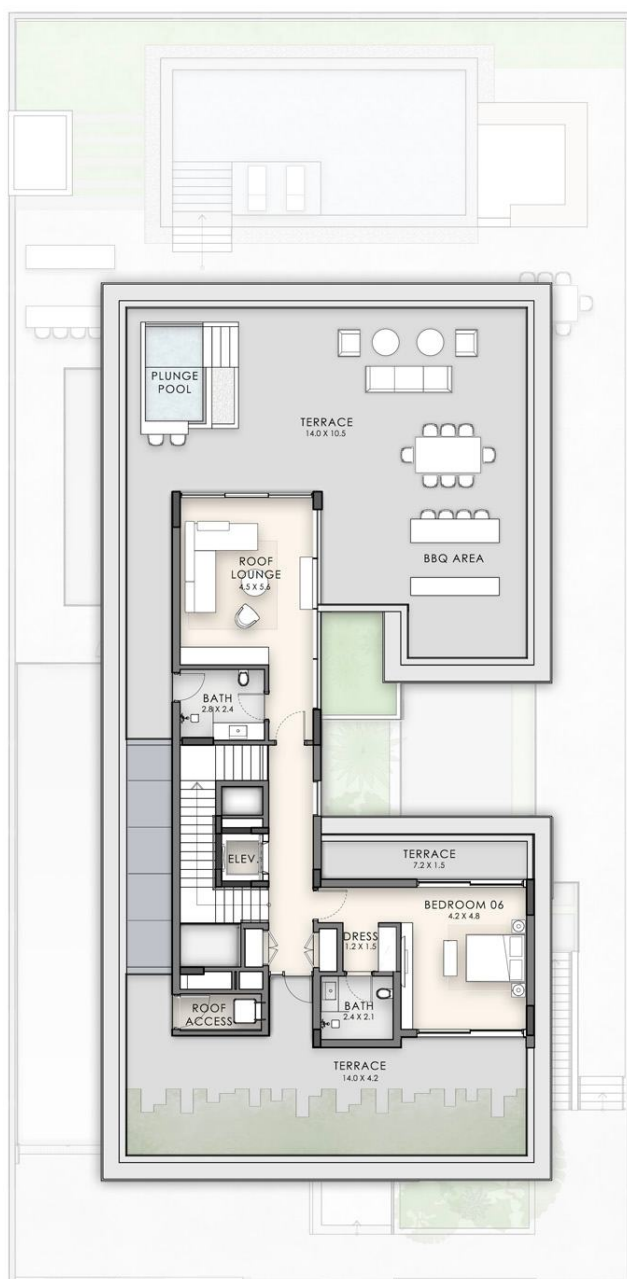
(1) All materials, dimensions, renders and drawings are approximate and for illustration purposes only. (2) Information is subject to change without notice. (3) Actual areas may vary from the stated area. (4) Drawings not to scale. (5) The developer reserves the right to make revisions/alterations without any liability whatsoever. (6) Units are sold as unfurnished, without furniture, fittings, etc.



First Area : 317 SQ.M | 3,414 SQ.FT

Disclaimer:

(1) All materials, dimensions, renders and drawings are approximate and for illustration purposes only. (2) Information is subject to change without notice. (3) Actual areas may vary from the stated area. (4) Drawings not to scale. (5) The developer reserves the right to make revisions/alterations without any liability whatsoever. (6) Units are sold as unfurnished, without furniture, fittings, etc.



Second Area : 327 SQ.M | 3,518 SQ.FT

Disclaimer:

(1) All materials, dimensions, renders and drawings are approximate and for illustration purposes only. (2) Information is subject to change without notice. (3) Actual areas may vary from the stated area. (4) Drawings not to scale. (5) The developer reserves the right to make revisions/alterations without any liability whatsoever. (6) Units are sold as unfurnished, without furniture, fittings, etc.



NINETEEN

RIVIERA LAGOON

FOR MORE INFORMATION PLEASE CONTACT



STAY AHEAD, INVEST SMART

- +971 55 476 7630
- +971 4 368 7878
- info@afsrealestate.com
- www.afsrealestate.com



DUBRICKS
POSSIBILITIES ARE LIMITLESS

- +971 50 674 2020
- +971 4 368 7878
- info@dubricks.com
- www.dubricks.com